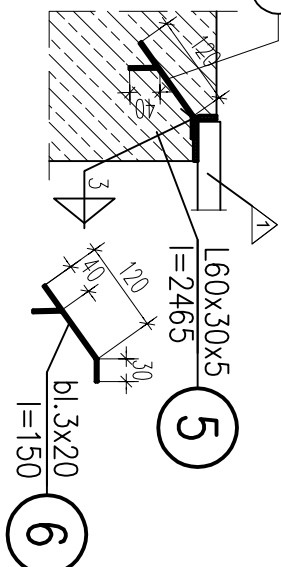
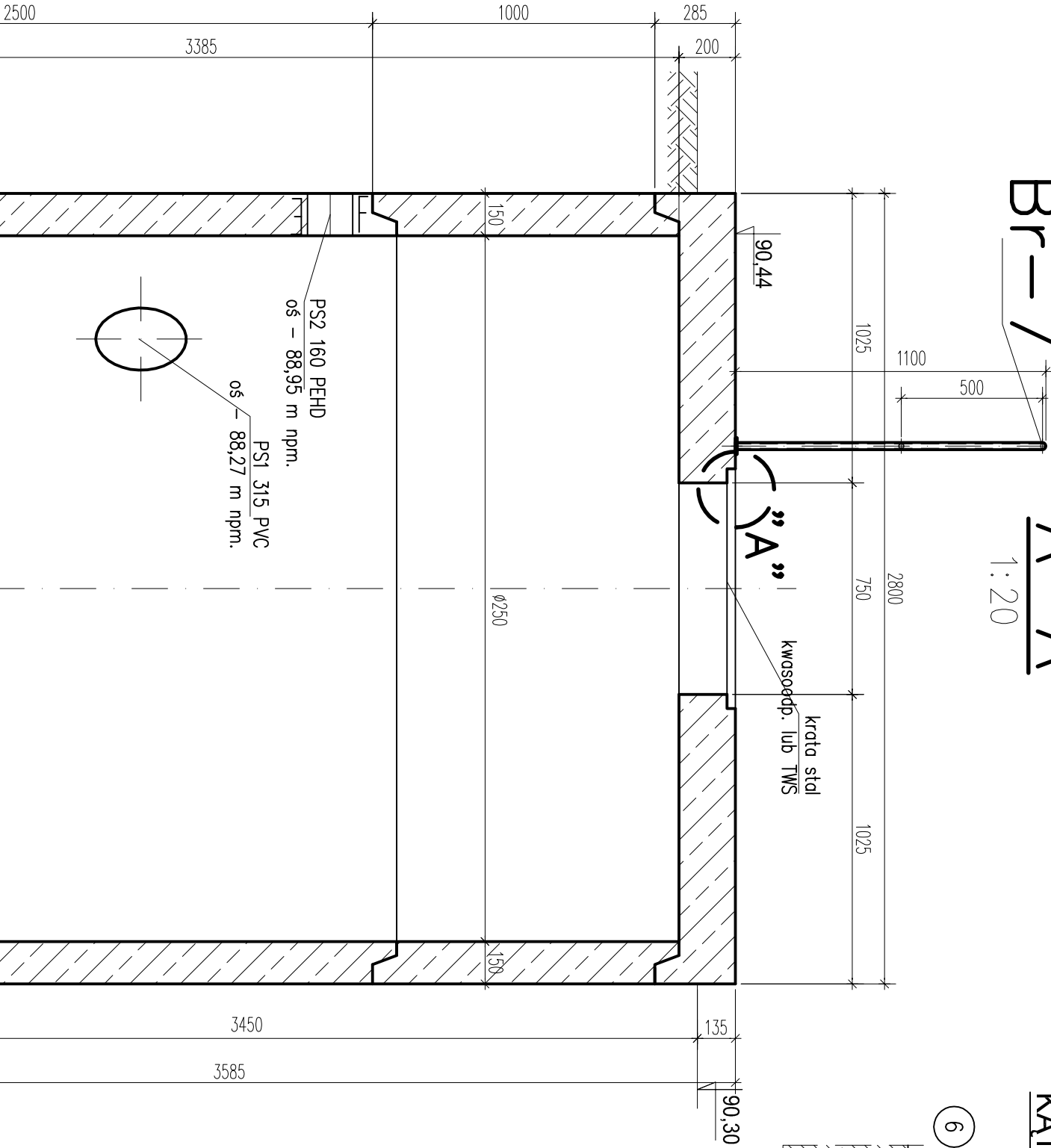
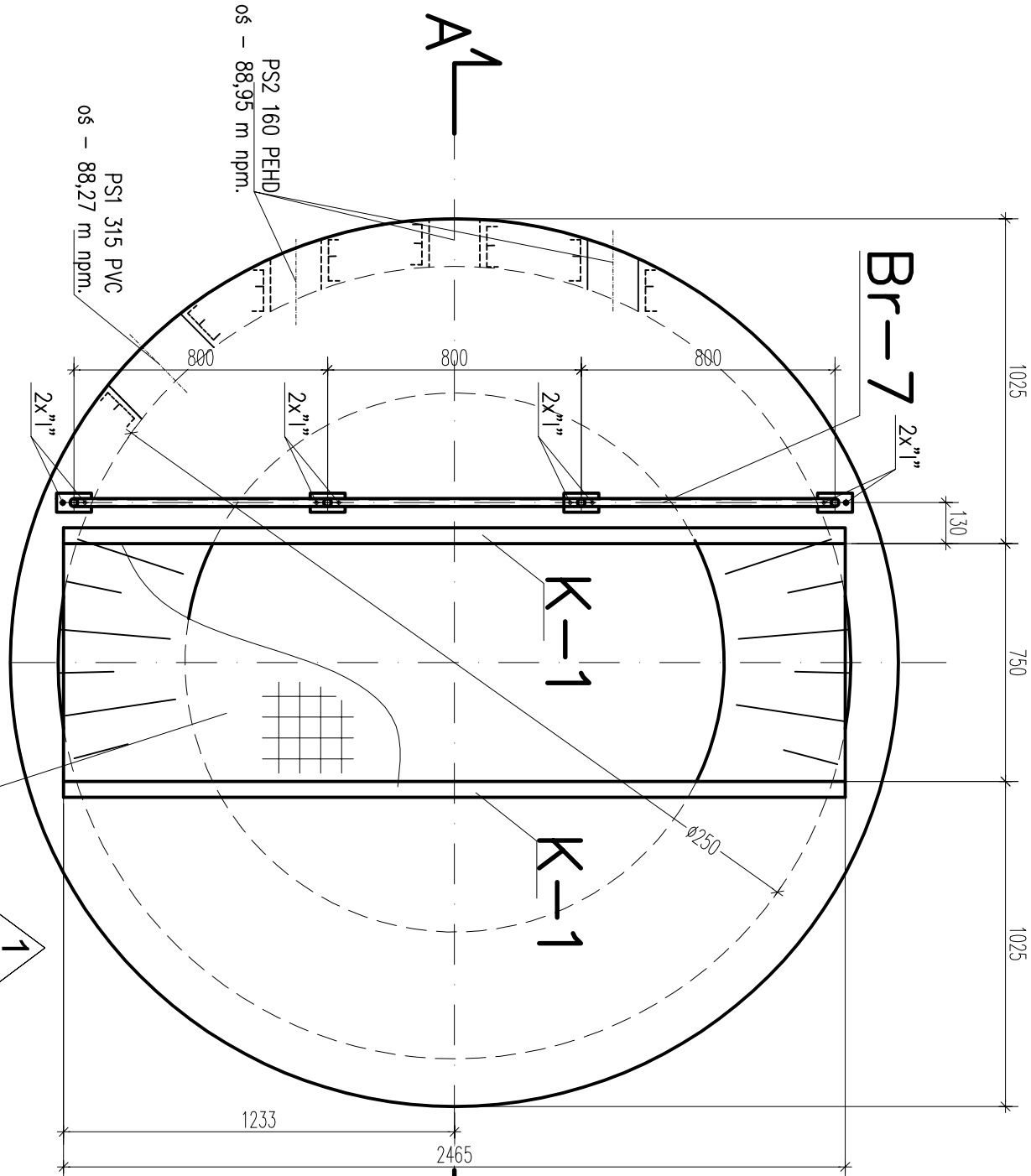
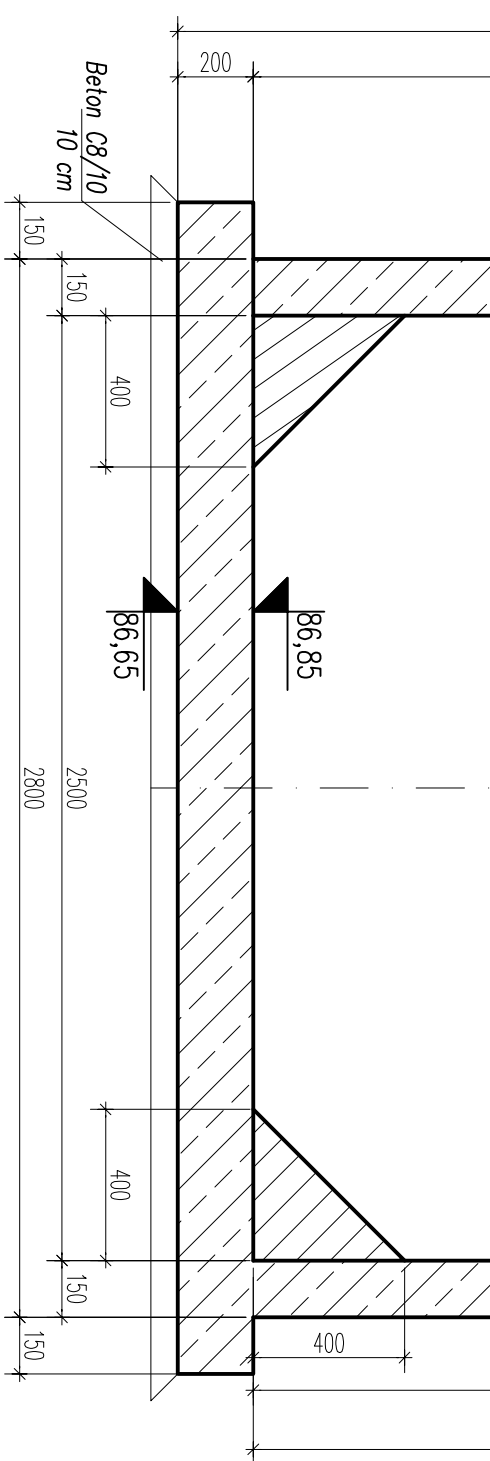
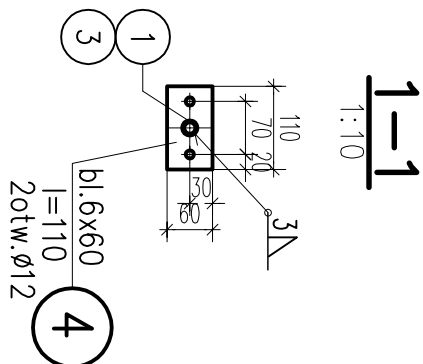
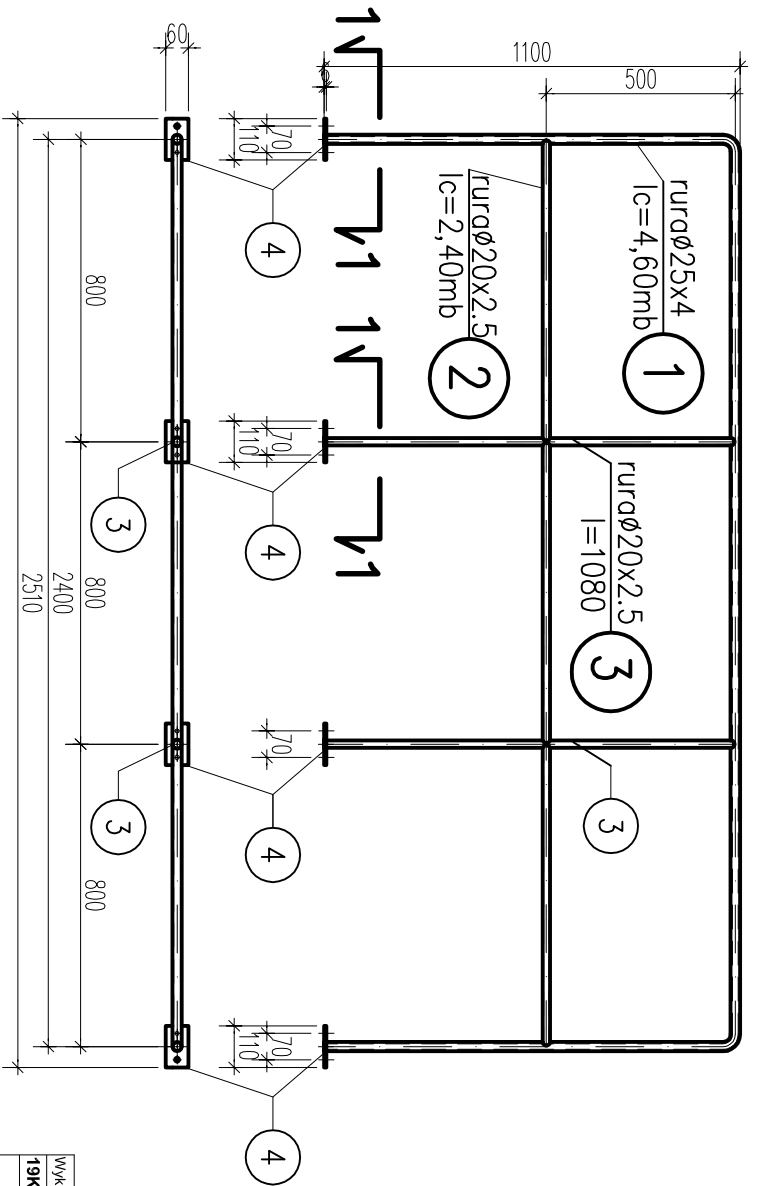


Br-7  
A-A  
1:20

DETAIL "A"  
KĄTOWNIK K-1 szt.2  
1:10



Barierka Br-7 szt.1  
1:20



ZESTAWIENIE STALI PROFILOWEJ

| Wzrost stali nr                     |        | Data             |         | Obiekt                                 |     | Oczyszczalnia ścieków Ślawsk |          | Nr rysunku |       |
|-------------------------------------|--------|------------------|---------|--|-----|------------------------------|----------|------------|-------|
| 19K                                 |        | 26-05-2009       |         | Element                                |     | POMPOWNIJA                   |          | 19K        |       |
| Kształtownik                        |        |                  |         | Ciepła KG                              |     |                              |          |            |       |
| Pos.                                | Wzrost | Przekrój         | Długość | Jedn.                                  | kg  | Na 1 element                 | Materiał |            | Uwagi |
| Barierka Br-7                       |        |                  |         | Szt. 1                                 |     |                              |          |            |       |
| 1                                   | 1      | Rura okr. 25x4   | 4600    | 2.1                                    | 9.5 | SSS                          |          |            |       |
| 2                                   | 1      | Rura okr. 20x2.5 | 2400    | 1.1                                    | 2.6 | SSS                          |          |            |       |
| 3                                   | 2      | Rura okr. 20x2.5 | 1080    | 1.1                                    | 1.2 | SSS                          |          |            |       |
| 4                                   | 4      | M6x60            | 110     | 2.8                                    | 0.3 | SSS                          |          |            |       |
|                                     |        |                  |         | Razem                                  |     | 15.7                         |          |            |       |
|                                     |        |                  |         | x1                                     |     | 15.7                         |          |            |       |
|                                     |        |                  |         | Całkowita masa stali dla 1 szt. wynosi |     | 0.3                          |          |            |       |
|                                     |        |                  |         | Dodatek na spawy 1,80%                 |     | 11.2                         |          |            |       |
|                                     |        |                  |         | Całkowita masa stali dla 1 szt. wynosi |     | 16.0                         |          |            |       |
| Kształownik K-1                     |        |                  |         | Szt. 2                                 |     |                              |          |            |       |
| 5                                   | 1      | U60x30x3         | 2465    | 2.0                                    | 4.9 | SSS                          |          |            |       |
| 6                                   | 9      | M3x20            | 150     | 0.5                                    | 0.1 | 0.6                          | SSS      |            |       |
|                                     |        |                  |         | Razem                                  |     | 5.5                          |          |            |       |
|                                     |        |                  |         | x2                                     |     | 11.0                         |          |            |       |
|                                     |        |                  |         | Całkowita masa stali dla 1 szt. wynosi |     | 5.5                          |          |            |       |
|                                     |        |                  |         | Dodatek na spawy 1,80%                 |     | 0.1                          |          |            |       |
|                                     |        |                  |         | Całkowita masa stali dla 2 szt. wynosi |     | 11.2                         |          |            |       |
| Całkowita masa stali na p.s. wynosi |        |                  |         | 27.2 kg                                |     |                              |          |            |       |